

## Key Information

Total Assets*	£256.5m
Long term gearing <sup>††</sup> (Currently largely offset by cash and gilts)	26%
No. of Shares <sup>†</sup> (Ordinary 25p)	51,443,416
Net Asset Value <sup>†</sup>	396.9p
Net Asset Value (debt at Market Value) <sup>†</sup>	365.8p
Discount to NAV <sup>†</sup>	15.2%
Discount to NAV (debt at Market Value) <sup>†</sup>	7.8%
Share price*	310p
Gross Yield*	2.6%
AITC Sector	Global Growth
ISIN	GB0001490001
Sedol	0149000
RIC	BUT
Year end	30th November
Report and Accounts	Final posted in February Interim posted in July
Annual General Meeting	March
Dividends	March and August
Benchmark	60% FTSE All-Share Index and 40% FT/S&P World Index (ex UK)
Price Information	Financial Times The Daily Telegraph <a href="http://www.allianzgi.co.uk">www.allianzgi.co.uk</a>

\* Source: Datastream as at 30.06.05

† Source: Allianz Global Investors as at 30.06.05

Investment trusts are quoted companies listed on the London Stock Exchange. Their share price is determined by factors including demand, or lack of, which means that the shares may trade below (at a discount to) or above (at a premium to) the underlying net asset value.

In line with industry best practice, Net Asset Values (NAVs) are now shown that take into account the 'fair value' of debt. NAVs – namely available shareholders' funds divided by the number of shares in issue, with shareholders' funds calculated as the net value of all the company's assets having deducted liabilities – are now calculated after allowing for the valuation of debt at fair value or current market price, rather than at final repayment value. Most professional advisers and institutional investors already allow for fair value of debt when assessing NAV and discount information, so this change provides private investors with information which takes into account a more realistic impact of the cost of debt and thus a more realistic discount.

††Source: Datastream as at 30.06.05

Please also refer to Trust Aim & Characteristics, above right.

# The Brunner Investment Trust PLC

## Trust Aim & Characteristics

To increase the Trust's total return above the benchmark index of 60% FTSE All-Share and 40% FT/S&P World Index (ex UK sterling adjusted) over the long term. This objective will be achieved by investing in UK and international securities and by using appropriate gearing to enhance returns. The strategy of the Trust is designed to meet the requirements of those seeking a single investment in a diversified and professionally managed portfolio.

††Brunner seeks to enhance returns for its shareholders through gearing, in the form of bank borrowings, to buy more investments. Gearing can boost the Trust's returns when investments perform well, though losses can be magnified when investments do badly. You should be aware that this Trust may be subject to sudden and large falls in value and you could suffer substantial capital loss.

## Fund Managers' Review



Mark Lovett  
(UK)



Lucy MacDonald  
(Overseas)

Global equities produced positive returns in June as improving investor confidence allowed global indices to rise over 3% on the month. The Trust's performance was slightly ahead of this at 3.2%, helped by exposure to oil and gas companies, with BG group and Canadian Natural Resources, up 10% and 28% respectively.

In the leisure sector, exposure to holiday company Mytravel and cruise operator Carnival were assisted by increased bookings and a general shortage of supply in the sector. On the other side, holdings in electronic manufacturers Apple and LG Electronics balanced some of the returns. In the case of Apple much of the recent declines can be attributed to profit taking rather than more serious concerns of the company's growth outlook.

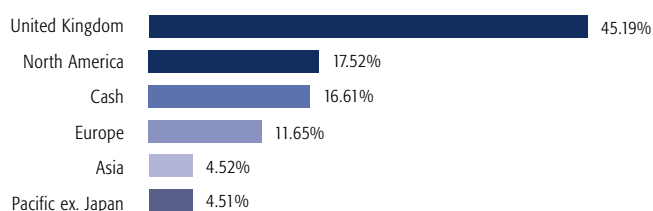
There are currently 129 holdings in the portfolio<sup>†</sup>.

## Top 10 Holdings

	%
Treasury 4.5% 7/3/07	9.65
GlaxoSmithKline	3.33
HSBC	3.31
BP	3.13
Shell Transport & Trading	2.14
Royal Bank of Scotland	2.11
Barclays	2.05
BG	2.02
BHP Billiton	1.89
Standard Chartered	1.46
<b>TOTAL</b>	<b>31.09</b>

Source: Allianz Global Investors as at 30.06.05

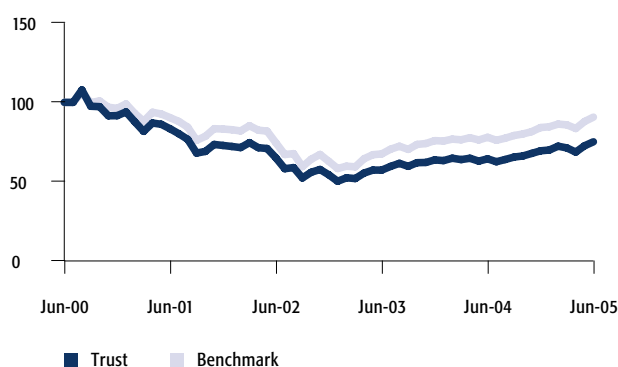
## Geographical Breakdown



Source: Allianz Global Investors as at 30.06.05. Changes in rates of exchange may cause the value of investments and the income from them to go down or up.

## Fund Performance

30.06.00 to 30.06.05



Source: Russell/Mellon/Allianz Global Investors. 30th June 00 to 30th June 05, Total Return, net income reinvested, calculation indexed. UK Sterling. Please remember that past performance is not a guide to future performance. The value of an investment and the income from it can fall as well as rise as a result of market or currency fluctuations and you may not get back the amount originally invested. This investment trust charges 70% of its annual management fee to the capital account and 30% to revenue. This could lead to a higher level of income but a lower capital return.

## Standardised Past Performance

From	30/06/00	29/06/01	28/06/02	30/06/03	30/06/04
to	29/06/01	28/06/02	30/06/03	30/06/04	30/06/05
<b>Share Price</b>	<b>-21.1%</b>	<b>-25.6%</b>	<b>-19.3%</b>	<b>10.8%</b>	<b>20.2%</b>

Source: Allianz Global Investors/S&P Micropal. Discrete years, mid to mid, basic rate tax, based in UK sterling. These Standardised Past Performance figures are produced for the purposes of these fact sheets and are intended for existing and potential investors. The above performance table differs in its presentation from Fund Performance, and complies with the Financial Services Authority's regulations to enable investors to compare different products from different providers.

Allianz Global Investors is the marketing name of RCM (UK) Ltd., which is authorised and regulated by the Financial Services Authority. Issued by RCM (UK) Ltd. Registered office: 155 Bishopsgate, London, EC2M 3AD. Registered in England No. 2014586. Member of the Allianz Global Investors Marketing Group. Member of Allianz AG. FSA ref. 122219. The Financial Services Authority's website is at [www.fsa.gov.uk](http://www.fsa.gov.uk). The information contained herein including any expression of opinion is for

## History

The Brunner Investment Trust PLC was formed from the Brunner family's interest in the sale of Brunner, Mond & Co, the largest of the four companies which came to form ICI in 1926. The Trust has been managed by Allianz Global Investors (formerly Kleinwort Benson and now part of Allianz AG) since inception.

Launch Date: 1927.

Wind-up Date: None.

## Share Buybacks

The Trust is committed to repurchasing Ordinary shares, where market conditions are suitable, in order to enhance shareholder value. As at 30th June 2005, 12.6m shares have been repurchased for cancellation.

## Board of Directors

Keith Percy (Chairman), Ben Siddons, William Worsley, Richard Wakeling, Vivian Bazalgette

## Contacts

This trust is available via the Allianz Global Investors Maxi ISA, PEP/ISA Transfer and Share Plan. For more information please call Investor Services or our Brochure Request line for any literature you may require.

Investor Services

**020 7065 1407**

Brochure Request

**0800 317 573**

Web Address

**[www.allianzgi.co.uk](http://www.allianzgi.co.uk)**

information purposes only and is given on the understanding that it is not a recommendation and anyone who acts on it, or changes their opinion thereon, does so entirely at their own risk. The opinions expressed are based on information which we believe to be accurate and reliable, however, these opinions may change without notice. Dresdner Kleinwort Wasserstein makes markets in Allianz Global Investors investment trusts.